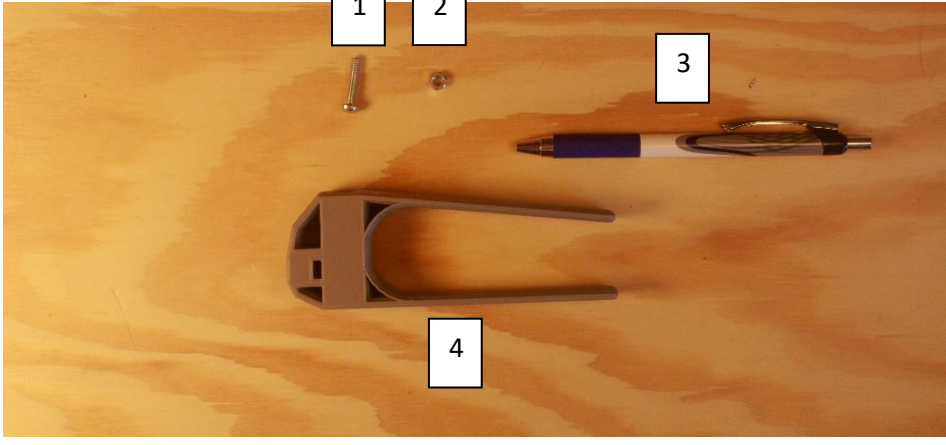


Palm Pen Holder

ASSEMBLY GUIDE

Required Components

	<p>Required Materials:</p> <ol style="list-style-type: none">1. 1x M4- 0.70 X 20 Machine Screw2. 1x M4- 0.70 Machine Screw Nut3. Writing Device (ex: Pen, Paintbrush, Pencil, etc)4. 1x 3D Printed Palm Pen Holder
--	--

Required Tools

- 3D printer
- Screwdriver

Required Personal Protective Equipment (PPE)

- Safety Glasses

Palm Pen Holder

ASSEMBLY GUIDE

Assembly Instructions

Step 1

Gather materials needed and ensure that all of the holes in the Palm Pen holder are not obstructed by extra filament. If any holes are, attempt to remove extra filament with a blade or tweezers.



Step 2

Insert the set screw nut into the rectangular slot on the outside face of the Palm Pen Holder. The M4 nut should slide in snugly, you may have to assist it with a screwdriver or writing device.

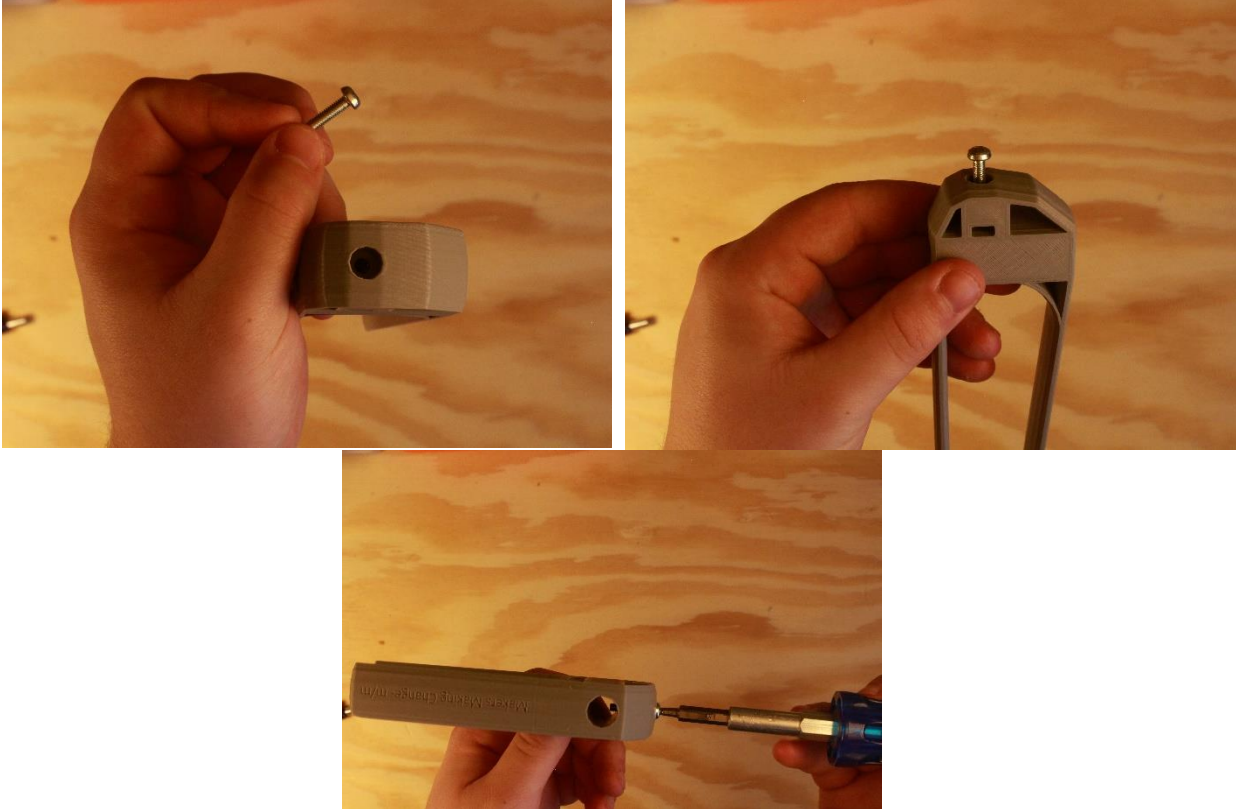


V1.0 | September 2021

Palm Pen Holder ASSEMBLY GUIDE

Step 3

Now gently thread on the set screw in the hole on the top of the device. This set screw will be used to fix the writing device while in the pen hole.



Step 4

Insert the writing device and tighten the set screw so the chosen writing utensil is fixed.

